



Speldhurst Road, London, W4 1BX

Guide Price £1,200,000

**WHITMAN & CO.**

SALES · LETTINGS · COMMERCIAL

- Fantastic transport links
- Sought-after residential street
- Within the catchment area of an outstanding primary school
- Host of original features
- Beautifully presented
- 47' landscaped garden with rear access

Tenure - Freehold  
Local Authority - Ealing  
Council Tax - Band F

## THE PROPERTY

A light and spacious period family home offering an excellent balance of living and entertaining space, situated on a sought-after residential street.

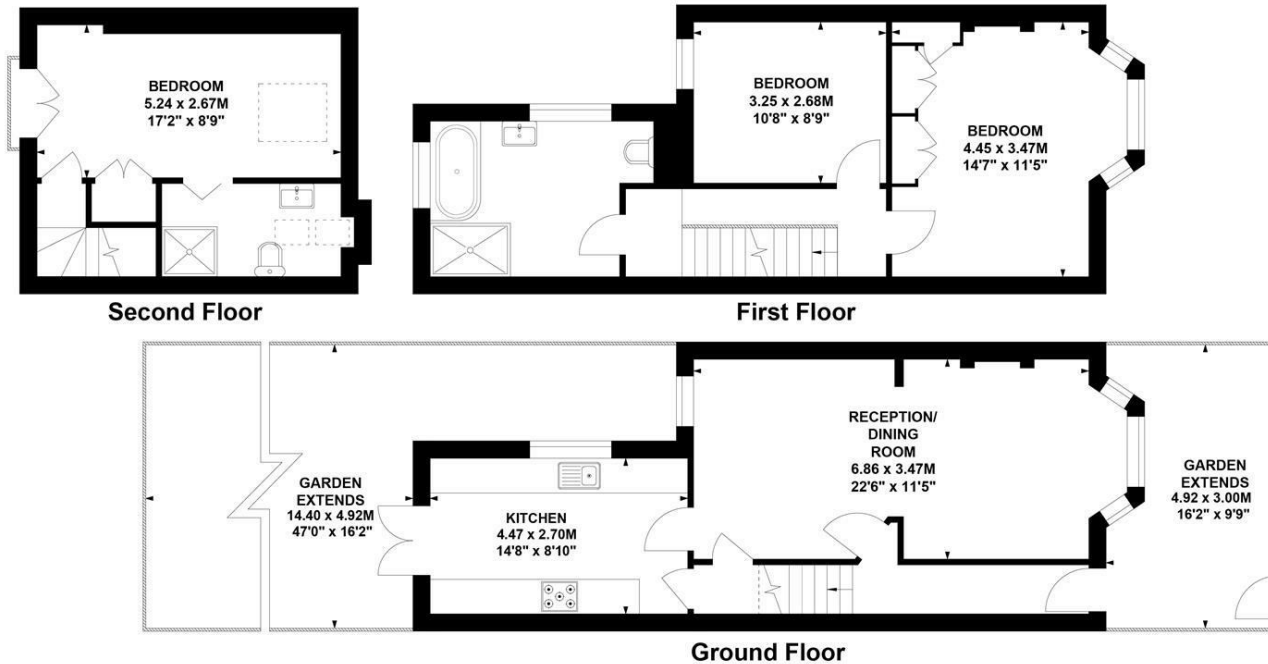
The property features a master bedroom with en suite, two further double bedrooms, a luxury bathroom, a 22' through reception room, and a recently fitted bespoke kitchen. Further benefits include a private 47' landscaped garden with rear access.

Ideally located within close proximity to Turnham Green Tube Station and the extensive range of shops, bars, and restaurants on Chiswick High Road.

## Speldhurst Road, W4

Approximate Gross Internal Area  
101.8 sq m / 1095 sq ft

Key :  
CH - Ceiling Height



Not to scale, for guidance only and must not be relied upon as a statement of fact.  
All measurements and areas are approximate only

## SITUATION



5-7 Turnham Green Terrace, Chiswick, London, W4 1RG

Tel 020 8747 8800

E-mail [sales@whitmanandco.com](mailto:sales@whitmanandco.com)

Website [www.whitmanandco.com](http://www.whitmanandco.com)

